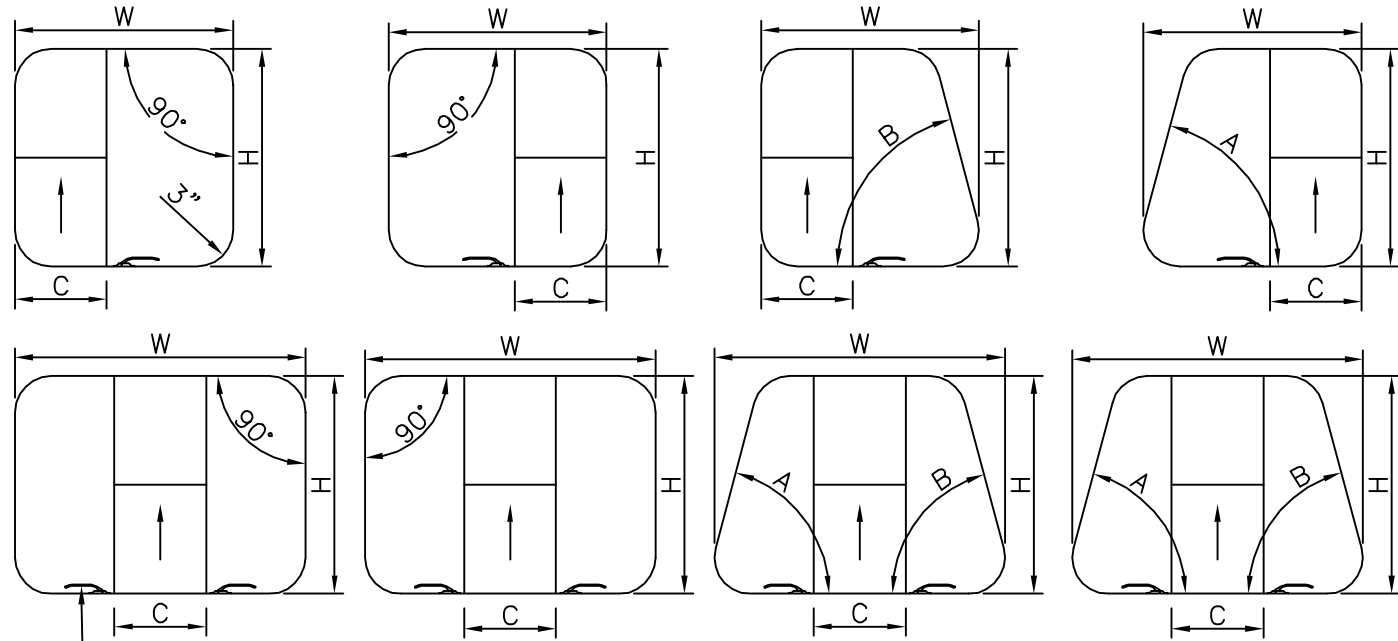


# Specs pour fenêtres guillotine combiné (sortie d'urgence)

TYPE: Fixe\_\_\_ Guillotine combiné\_\_\_

COULEUR: Blanc\_\_\_ Noir\_\_\_



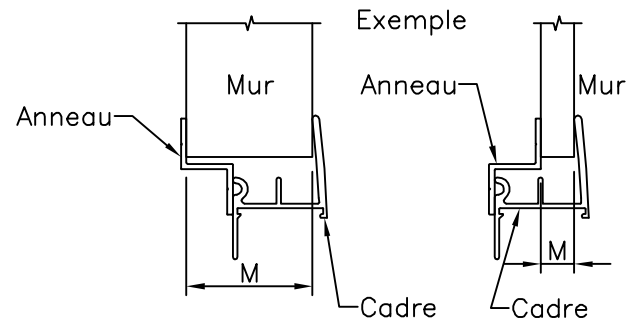
Poignée sortie d'urgence

Dimensions (version combiné)

W (largeur ouverture)=\_\_\_\_\_ (18" min. - 72" max.)  
 H (hauteur ouverture)=\_\_\_\_\_ (12" min. - 60" max.)  
 C (largeur guillotine)=\_\_\_\_\_ (6" min. ou 1/3 de W max.) (A confirmer quand A et/ou B autre que 90°)  
 Angle A= \_\_\_\_\_ Angle B= \_\_\_\_\_

Dimension M:

- 0.36" \_\_\_
- 0.46" \_\_\_
- 0.86" \_\_\_
- 1.26" \_\_\_
- 1.36" \_\_\_
- 1.83" \_\_\_
- 2.06" \_\_\_
- 2.30" \_\_\_
- Aucun anneau \_\_\_



VERRE

TYPE	TEINTE
Trempé 3MM ___	Clair ___ Priv. 26% ___ Graylite 31% ___ Gray 62% ___ Bronze 68% ___
Trempé 5MM ___	Clair ___ Priv. 26% ___
Laminé 6MM ___	Clair ___ Blue Gray 28% ___

NOTES:

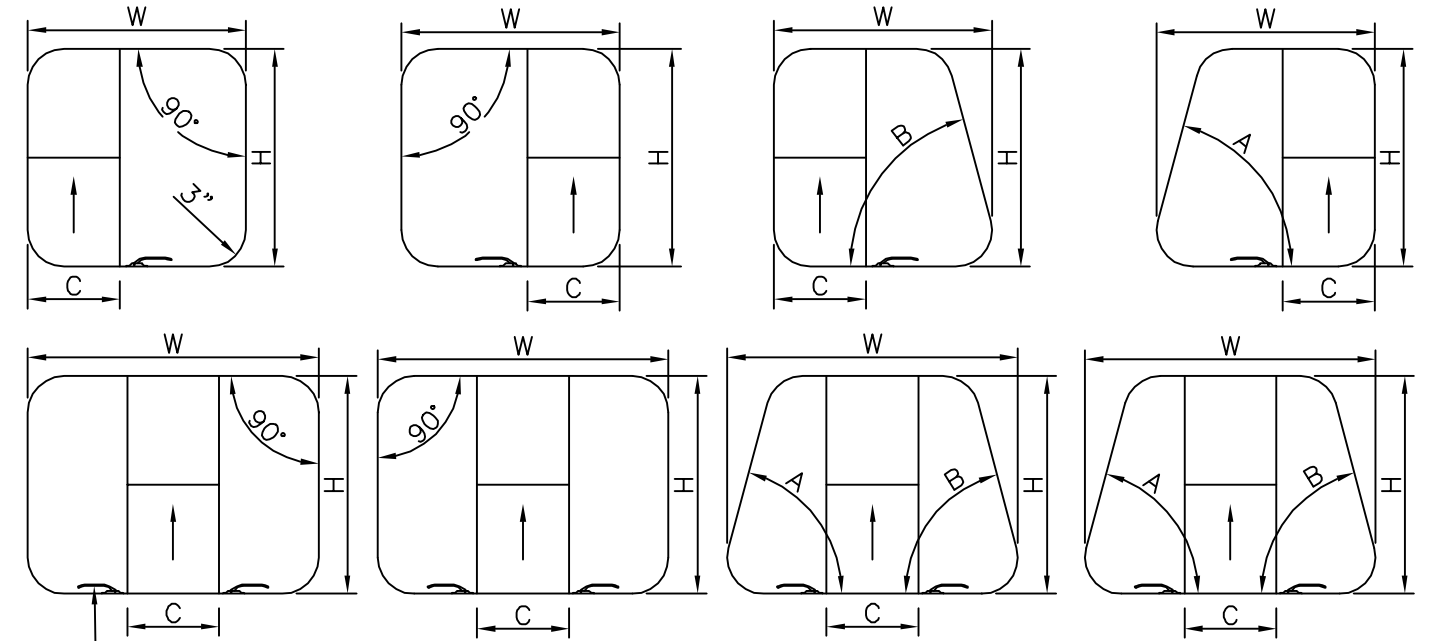
Livraison: 4 à 6 semaines  
 Demandes spéciales: s'informer pour coûts, délais de livraison et faisabilité.

29 mars 2004

# Specs for combined sash windows (emergency exit)

TYPE: Fixed\_\_\_ Combined sash\_\_\_

COLOR: White\_\_\_ Black\_\_\_



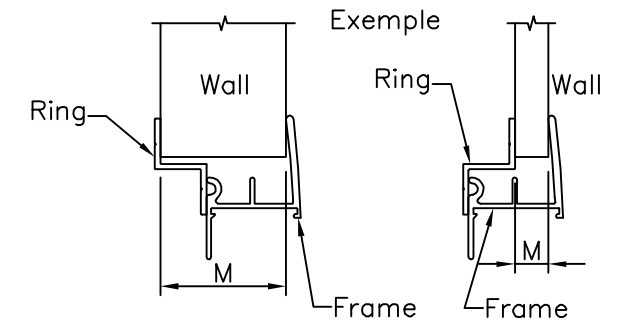
Emergency exit handle

Dimensions (combined version)

W (opening width)=\_\_\_\_\_ (18" min. - 72" max.)  
 H (opening height)=\_\_\_\_\_ (12" min. - 60" max.)  
 C (sash width)=\_\_\_\_\_ (6" min. or 1/3 of W max.) (To be confirmed when A and/or B other than 90°)  
 A angle= \_\_\_\_\_ B angle= \_\_\_\_\_

Dimension M:

- 0.36" \_\_\_
- 0.46" \_\_\_
- 0.86" \_\_\_
- 1.26" \_\_\_
- 1.36" \_\_\_
- 1.83" \_\_\_
- 2.06" \_\_\_
- 2.30" \_\_\_
- No ring \_\_\_



GLASS

TYPE	TINT
Tempered 3MM ___	Clear ___ Priv. 26% ___ Graylite 31% ___ Gray 62% ___ Bronze 68% ___
Tempered 5MM ___	Clear ___ Priv. 26% ___
Laminated 6MM ___	Clear ___ Blue Gray 28% ___

NOTES:

Delivery: 4 to 6 weeks  
 Special demands: contact us for prices, delivery status and feasibility.

March 29 2004